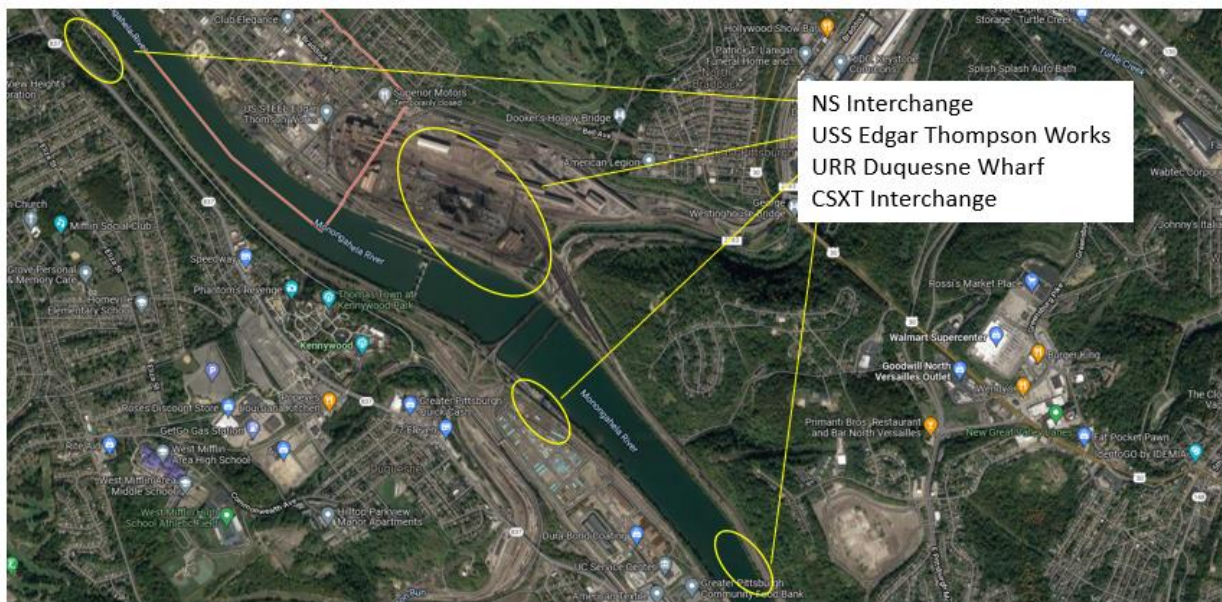


Duquesne Wharf:

- Strategically located at milepost 11.65 on the Monongahela River just southeast of Pittsburgh, Union Railroad's Duquesne Wharf can be a key river-to-rail transfer point. Duquesne Wharf offers flexibility, efficiency, and service found nowhere else along U.S. rivers. Operating in river levels ranging from 9.5 to 18 feet, Duquesne Wharf also includes upper and lower fleeting areas for up to 58 loaded and 40 empty barges at one time.
- Barges traveling the Inland Waterways can arrive at Duquesne Wharf, where their loads of bulk commodities can be transferred to rail and routed to local industries, north to the Great Lakes, to rail-served points throughout northeastern United States and Canada, and to the eastern seaboard for export.
- Owned and operated by Union Railroad, the Duquesne Wharf Facility offers streamlined management of barge-to-rail transport. In addition to its direct service to steel and associated industries throughout the Monongahela Valley, Union Railroad provides daily interchange service between Bessemer & Lake Erie (B&LE), CSX Transportation (CSXT) at Bessemer, PA; Wheeling & Lake Erie (W&LE) at Mifflin Junction, PA; Norfolk Southern (NS) at Clairton and Kenny, PA; and Buffalo & Pittsburgh (B&P) at Butler, PA (via B&LE) for delivery to lake ports.

Proximity to key interchange and facilities:



Other Views:

